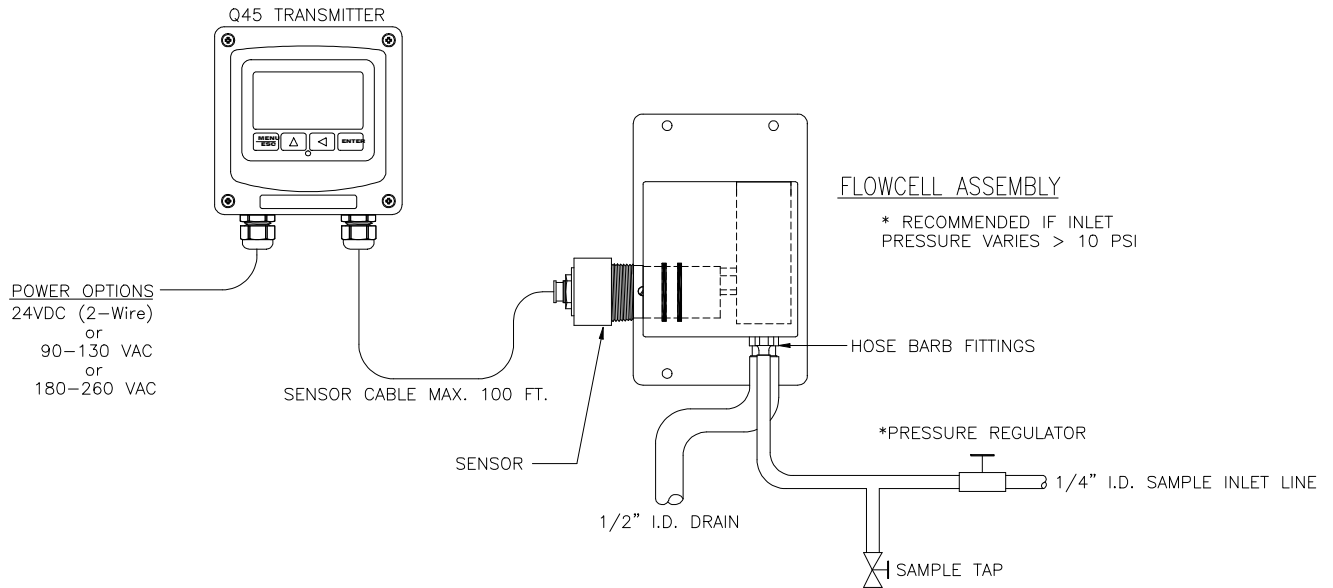
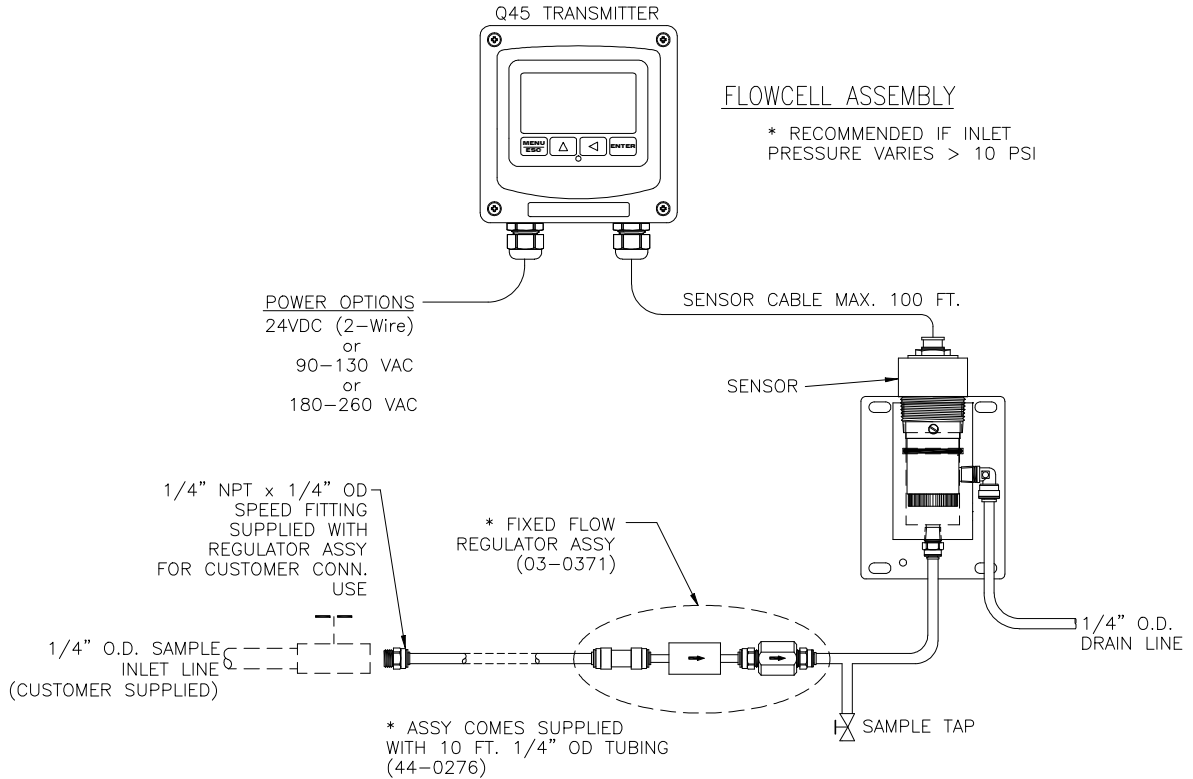


SYSTEM WITH CONSTANT HEAD FLOWCELL



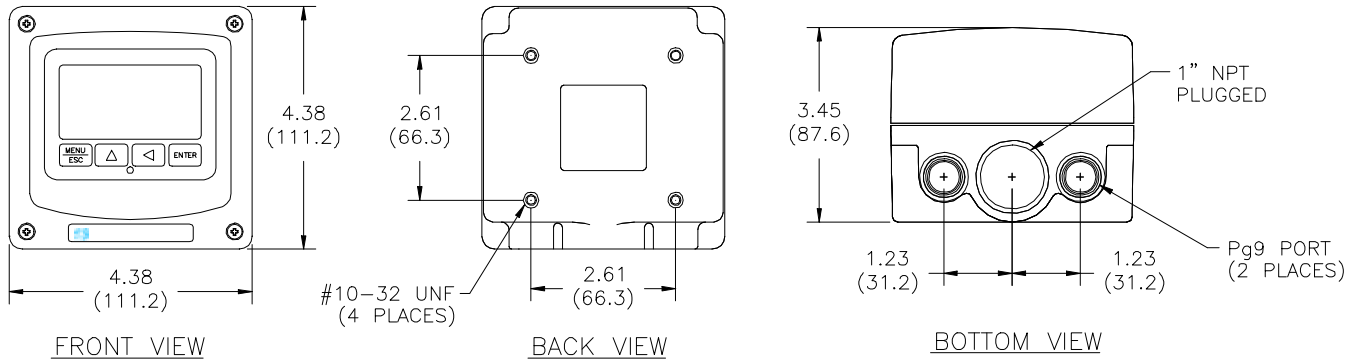
ATI-0730

SYSTEM WITH SEALED FLOWCELL



ATI-0891

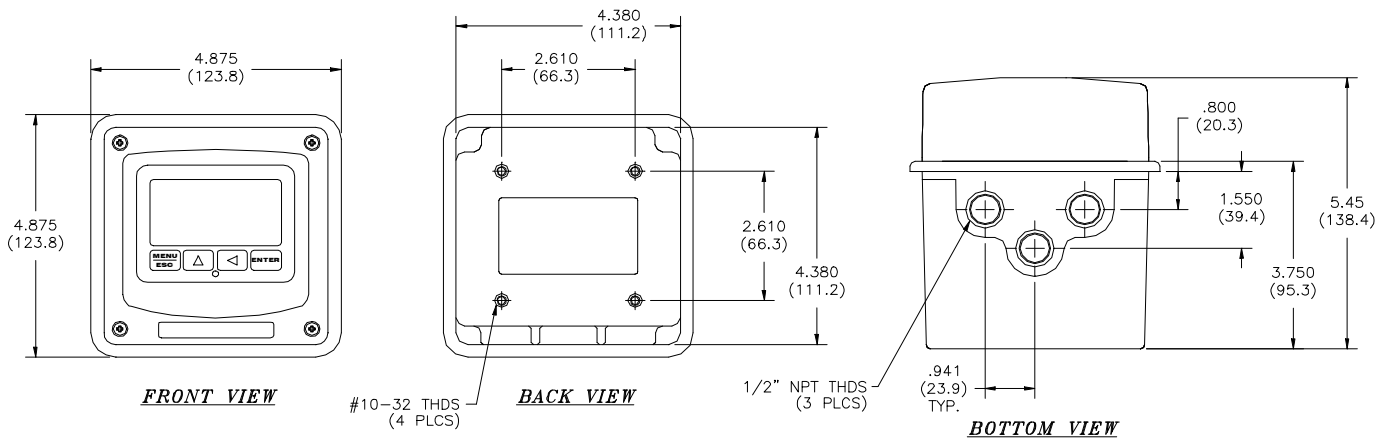
2-WIRE VERSION (or BATTERY POWERED)



NOTE: JUNCTION BOXES HAVE SAME DIMENSIONS AS 2-WIRE TRANSMITTER

ATI-0655

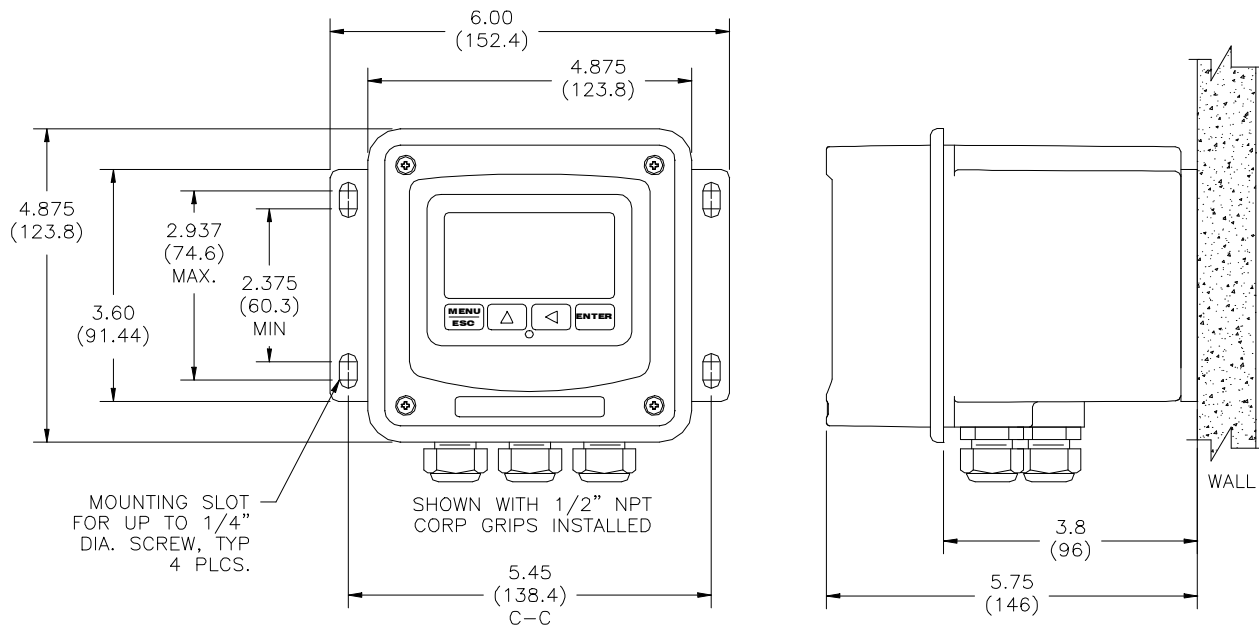
AC POWERED VERSION



Material: Polycarbonate
 Ratings: Nema 4X (IP-66)
 V-0 Fire Retardant

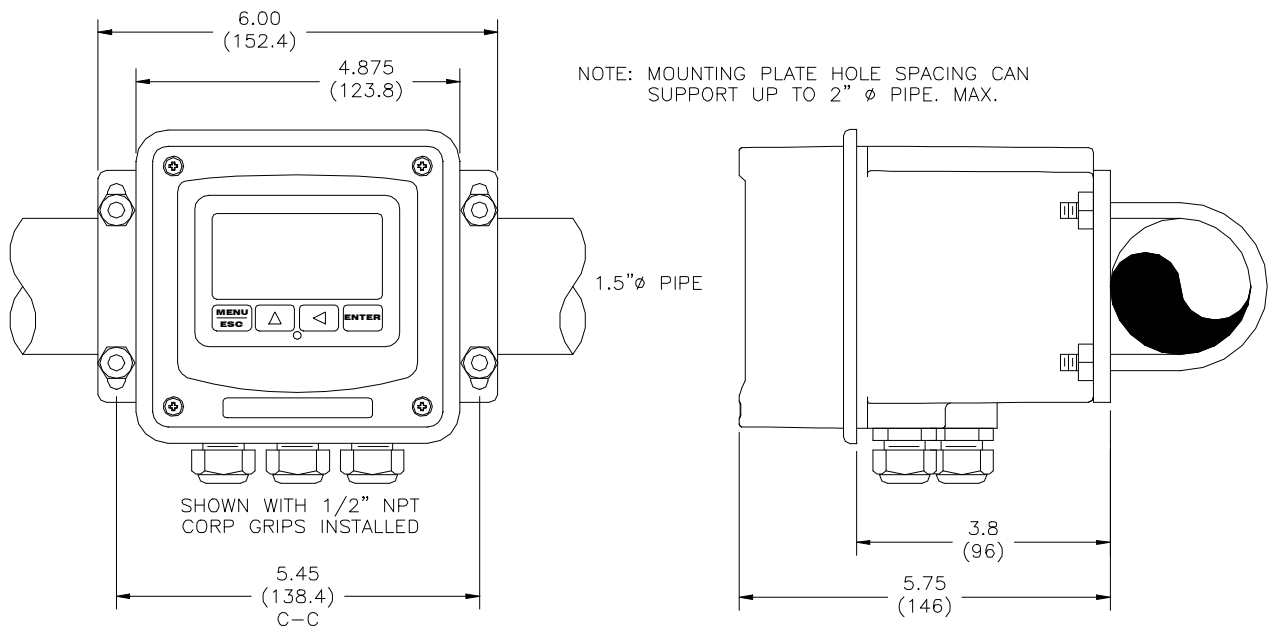
ATI-0706

WALL MOUNTING



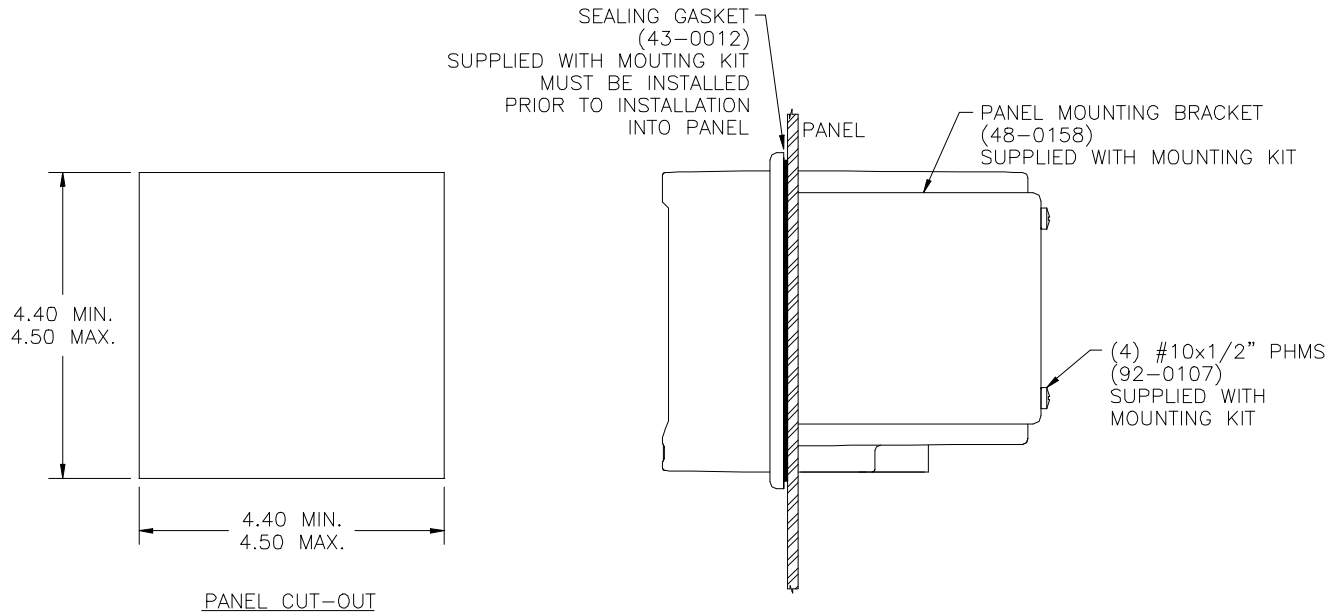
ATI-0709

PIPE MOUNTING



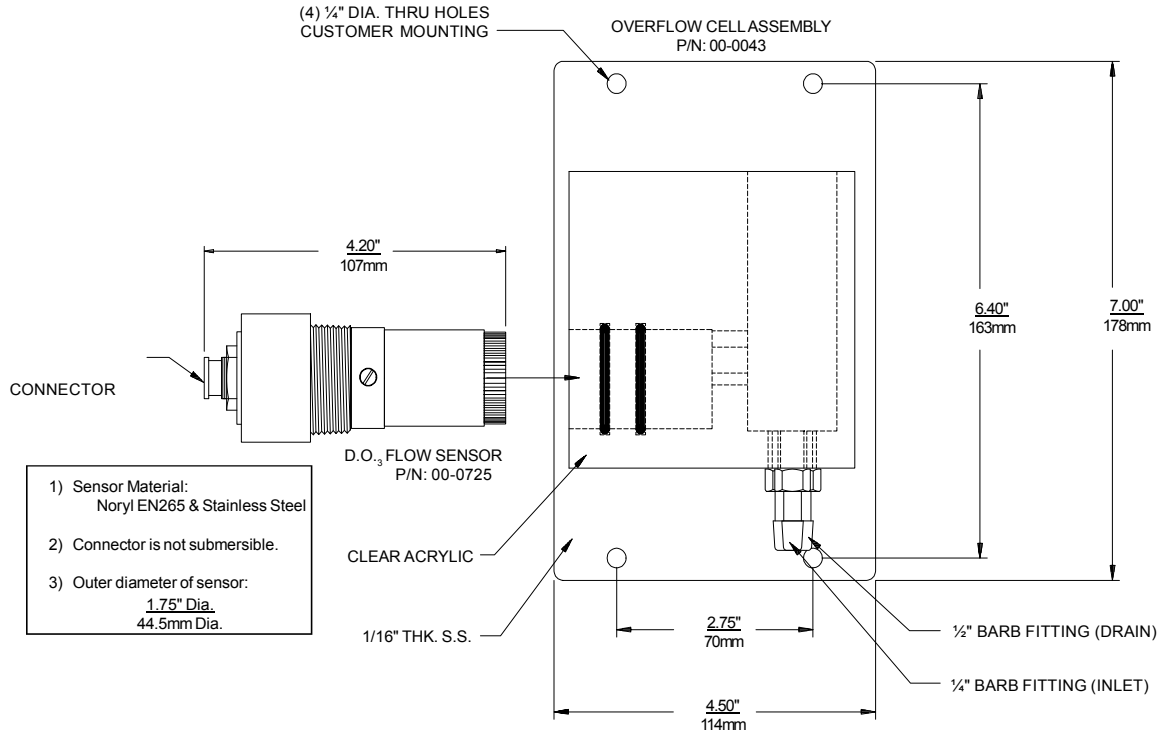
NOTE: PLATE MAY BE TURNED 90° FOR VERTICAL PIPE MOUNTING

ATI-0710

PANEL MOUNTING - AC UNITS

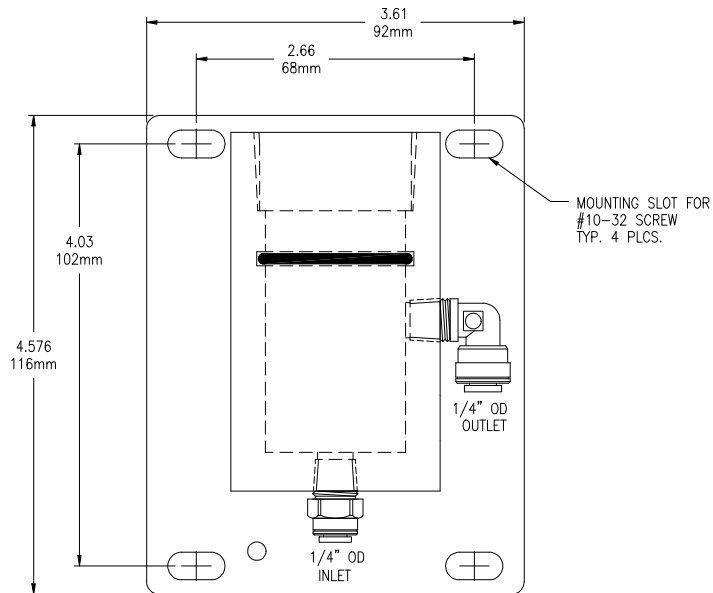
ATI-0711

FLOW SENSOR DIMENSIONS & OVERFLOW CELL INSTALLATION



ATI-0196

SEALED FLOWCELL ASSEMBLY DIMENSIONS

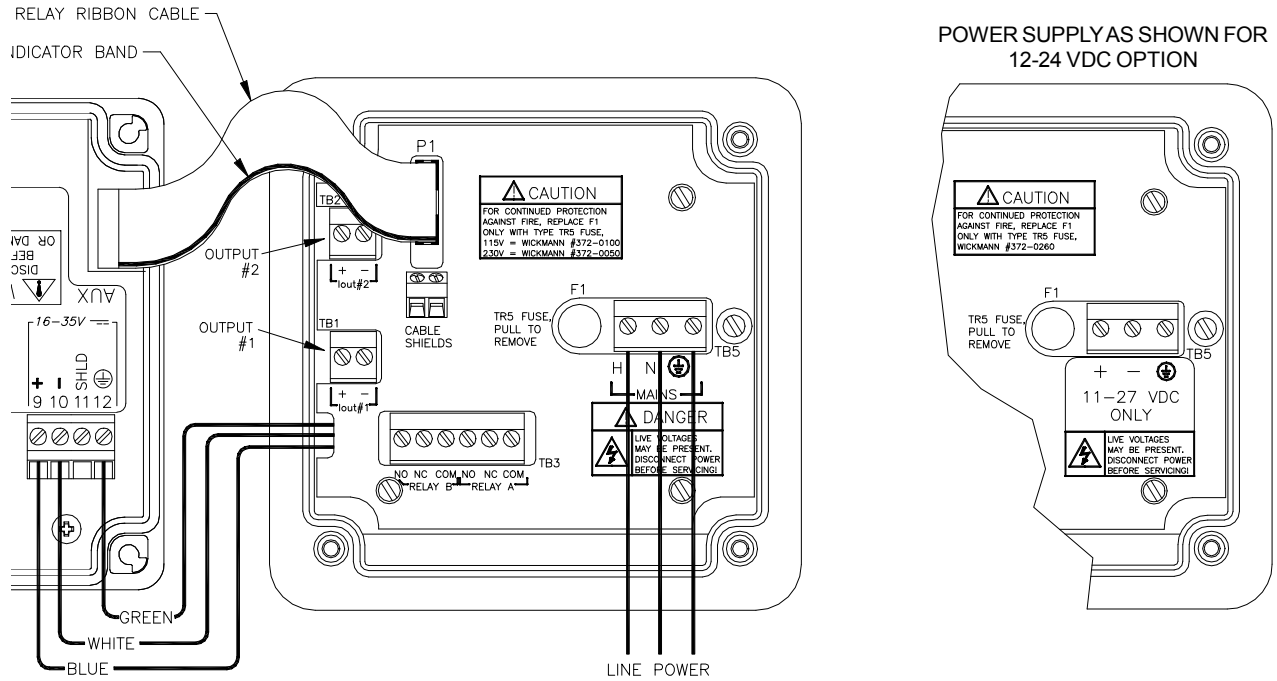


Material: Acrylic
Mounting Plate: PVC

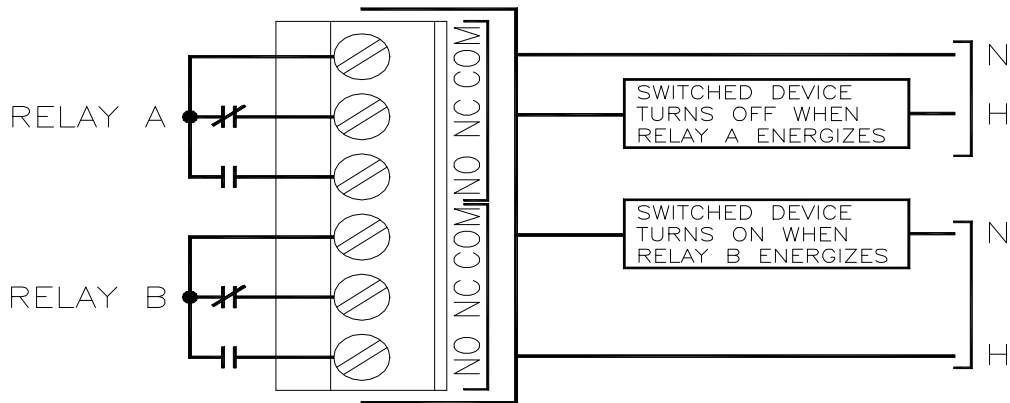
FLOW STYLE SENSOR
SEALED FLOWCELL ASSEMBLY

ATI-0859

POWER, RELAY, AND OUTPUT CONNECTIONS

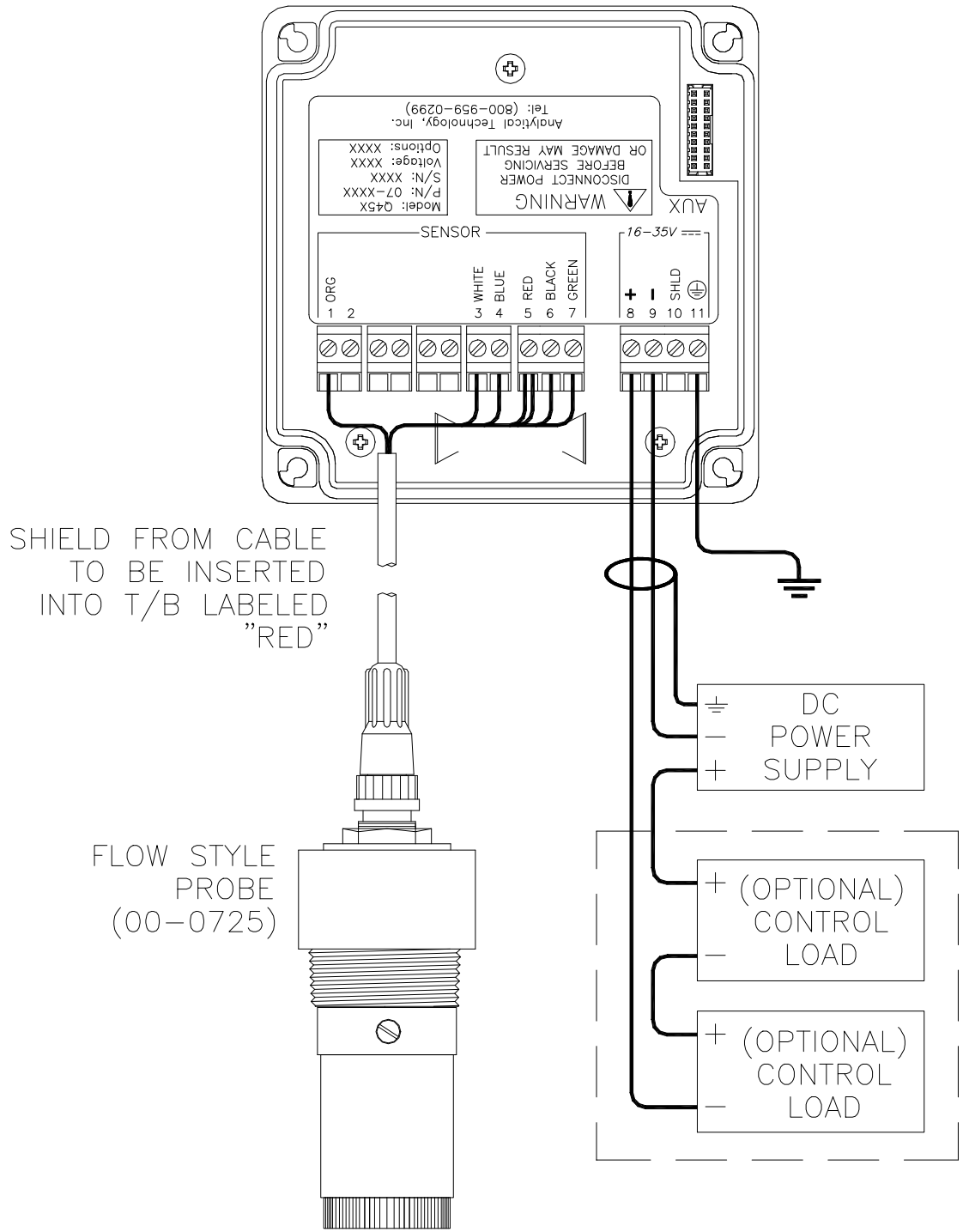


RELAY WIRING TB3 DETAIL



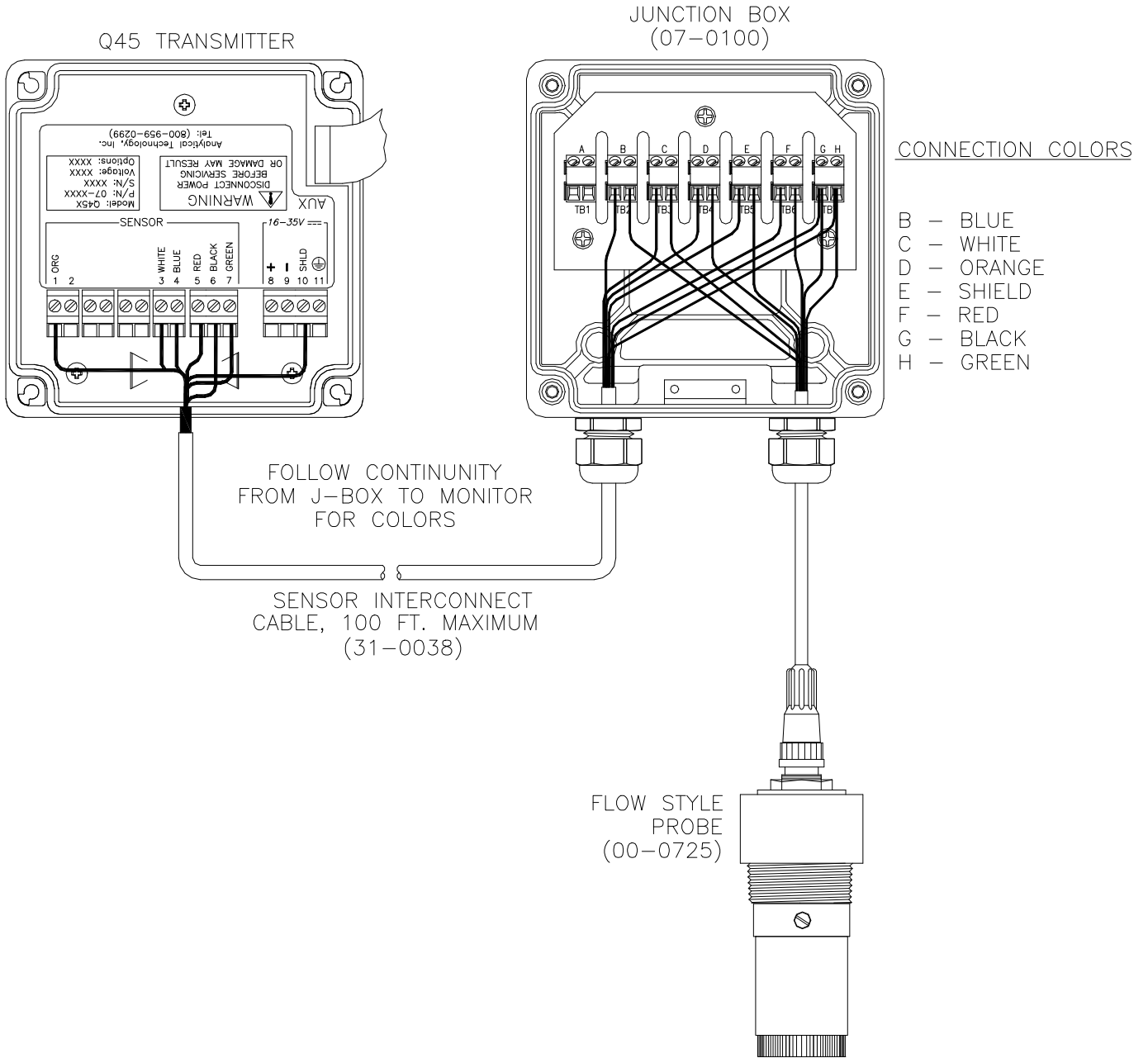
NOTE: DEVICE EXTERNAL WIRING ARE TYPICAL EXAMPLES. RELAY CONTACTS SHOWN IN NORMAL MODE.

ELECTRICAL CONNECTIONS - 2-WIRE TRANSMITTER



- NOTES:** 1. Voltage between Terminals 8 & 9 MUST be between 16 & 35 VDC.
 2. Earth ground into Terminal 11 is HIGHLY recommended. This connection can greatly improve stability in electrically noisy environments.

SENSOR CONNECTIONS - REMOTE JUNCTION BOX



ATI-0893