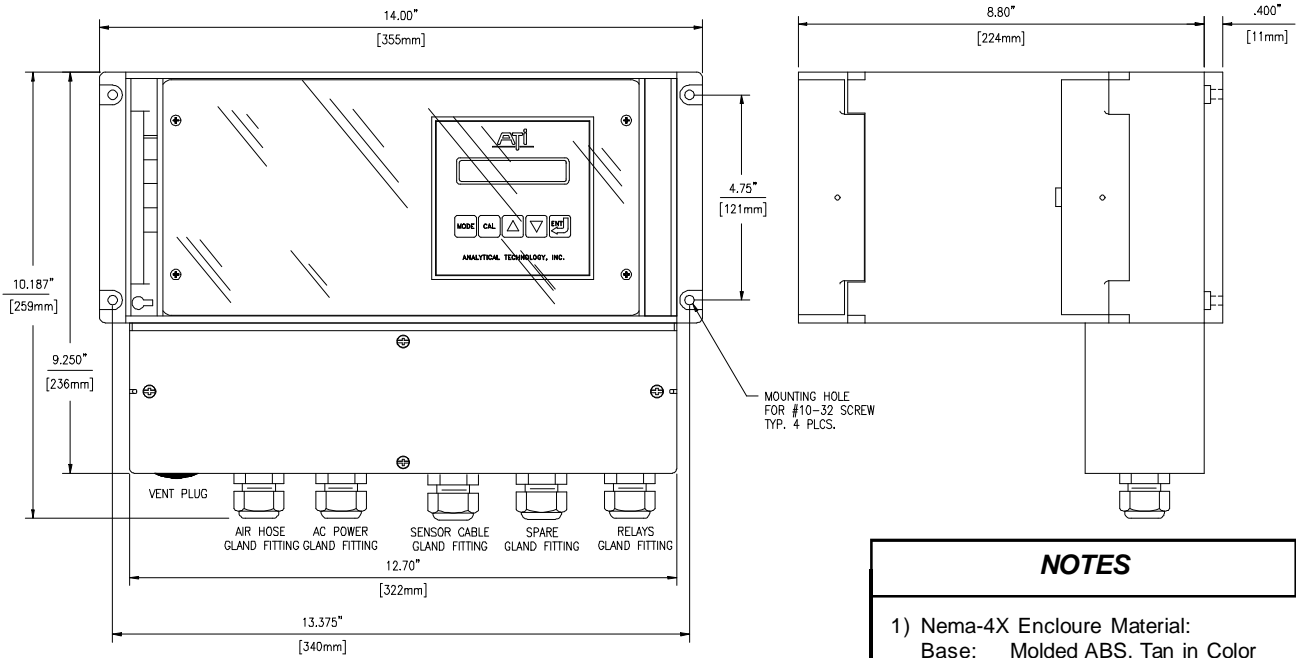


D15/76 AUTO-CLEAN TURBIDITY MONITOR

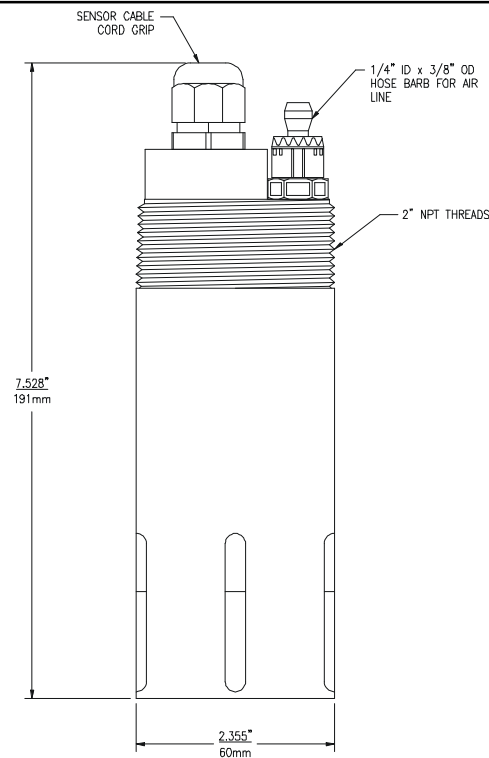


ATI-0473

NOTES

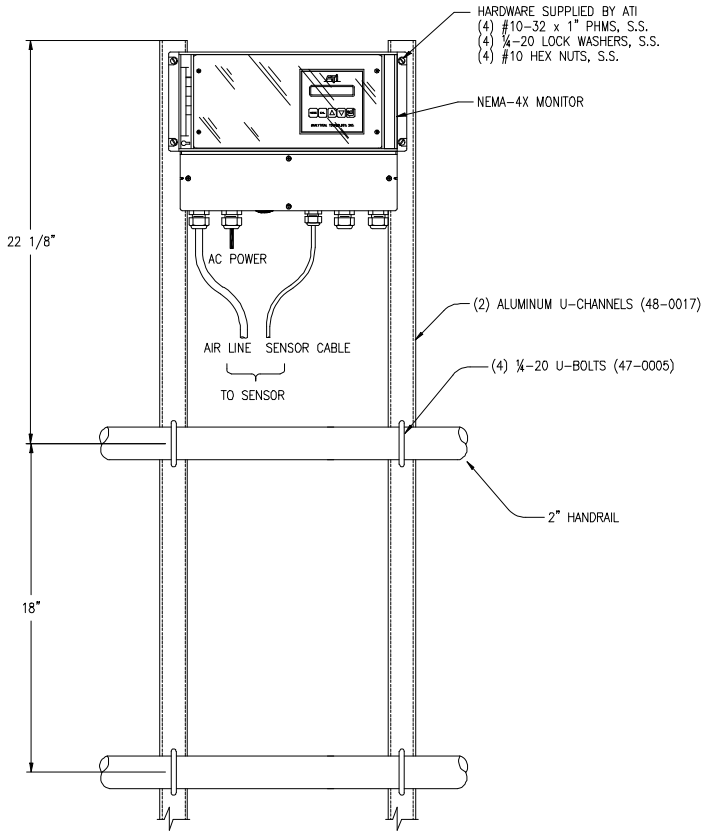
- 1) Nema-4X Enclosure Material:
 Base: Molded ABS, Tan in Color
 Cover: Clear Lexan w/Dual Hinge
- 2) Nema-4X Rating:
 Nema rated types 4, 4X
 IEC 529 rated IP66
- 3) Sensor Material:
 Noryl EN265 & Stainless Steel

AUTO-CLEAN TURBIDITY SENSOR



ATI-0553

MONITOR HANDRAIL INSTALLATION

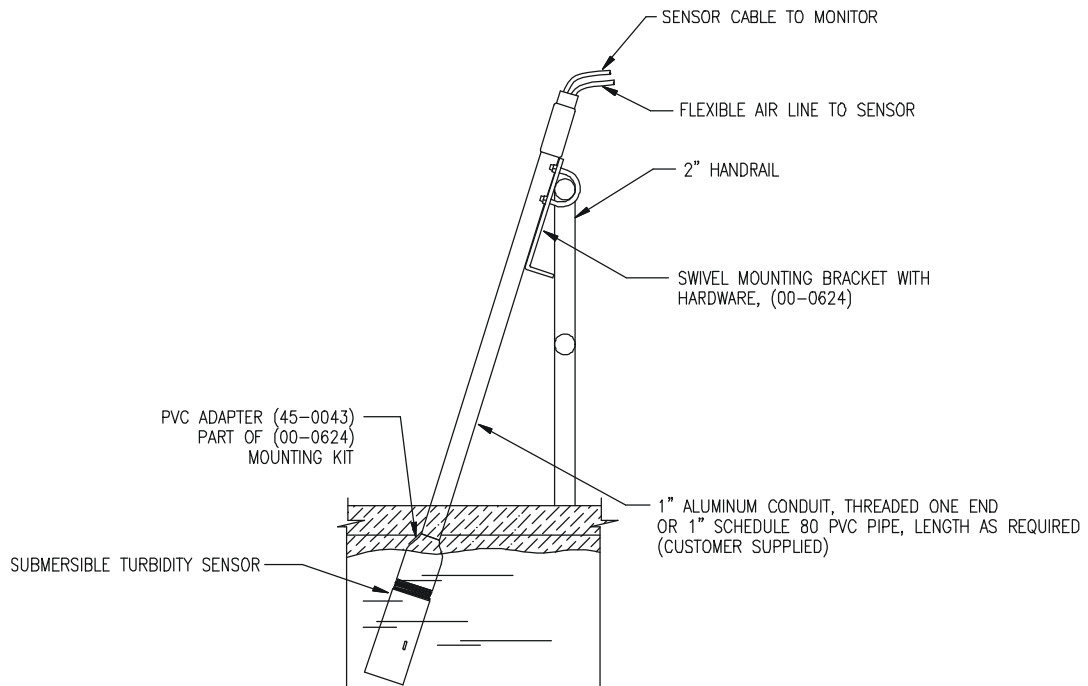


ATI-0490

NOTES

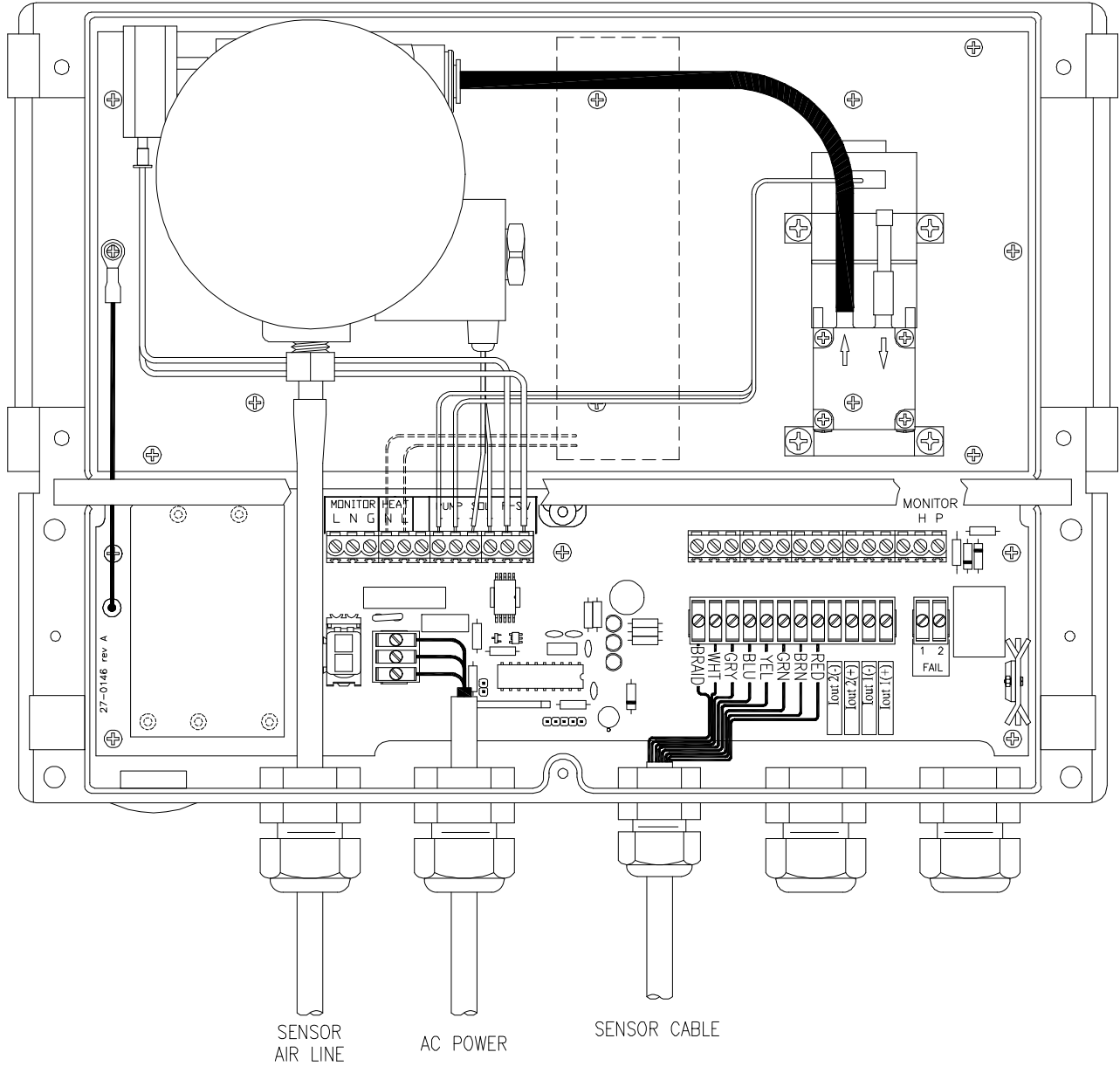
- 1) Always mount sensor cleaner within 25 ft. of sensor if possible. Maximum air line distance is 50 ft.
- 2) Sun shade over monitor is recommended in hot climates.
- 3) Monitor Handrail Mounting Kit # 00-0930 supplies all hardware listed for mounting monitor.
- 4) Wall mounting requires customer supplied screws or bolts.
- 5) Sensor Pipe Mounting Kit # 00-0624 supplies mounting plate with hardware and PVC pipe mounting adaptor.
- 6) Sensor Pipe Mounting Kit with Rag Shedder # 00-0629 supplies mounting plate with hardware and PVC rag shedder.

SENSOR HANDRAIL INSTALLATION



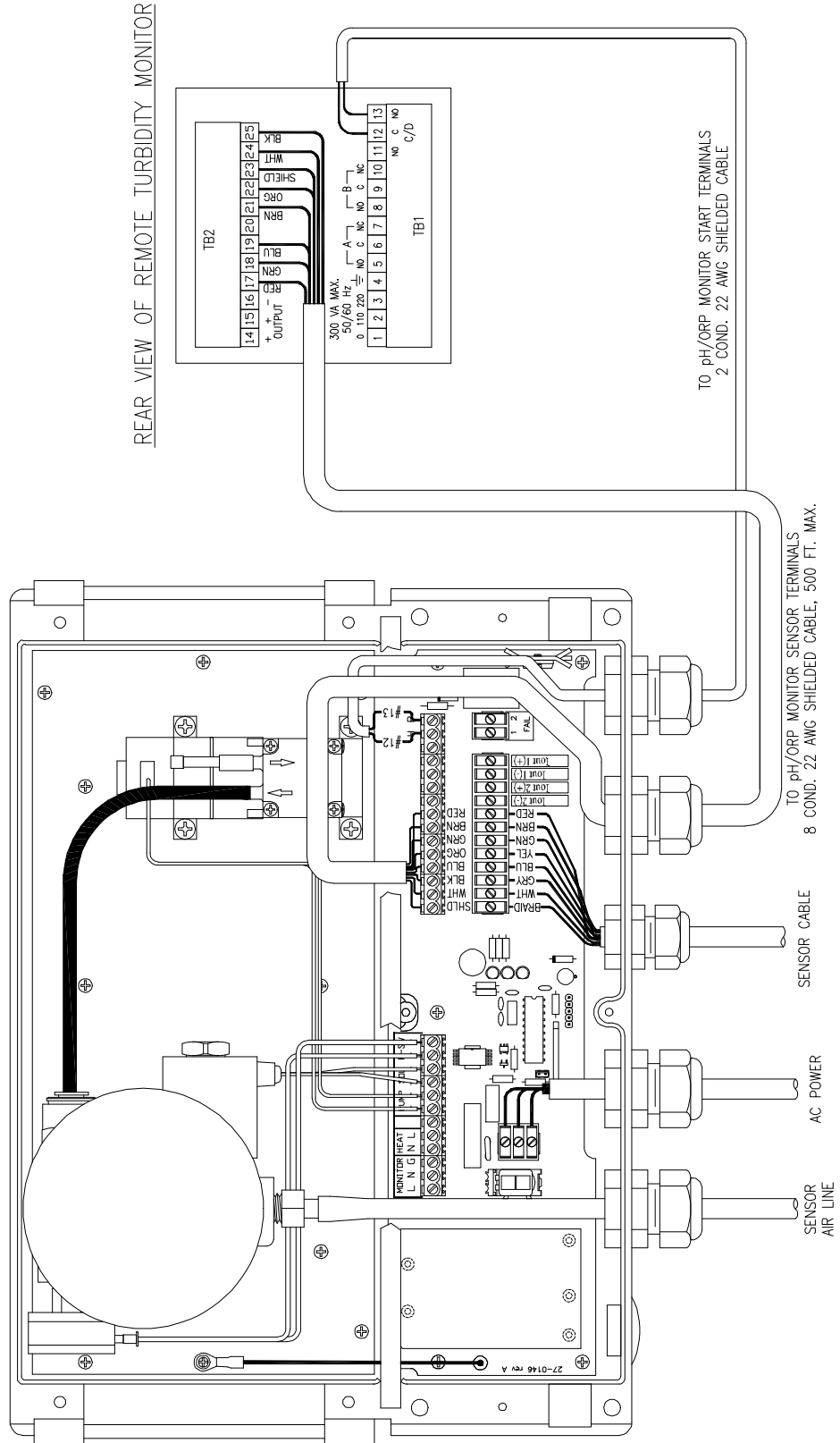
ATI-0447

STANDARD SYSTEM WIRING DIAGRAM



ATI-0534

REMOTE MONITOR WIRING DIAGRAM



ATI-0536